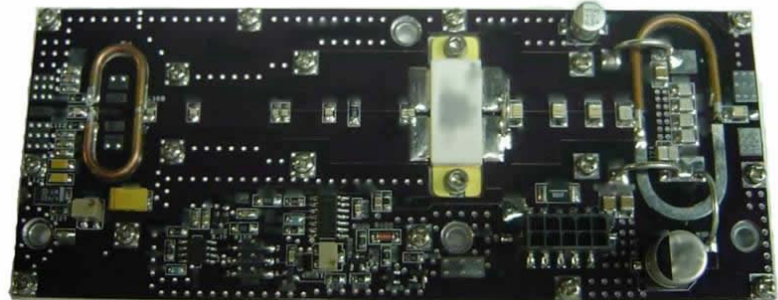


## Model UHFTV-50 TV Pallet Amplifier Module

This amplifier module is ideal for final output stages in analog and digital TV broadcast equipment.

- 470– 860MHz
- 32 Volts
- Pout: 100W Peak Sync.
- 20Watts digital power.
- 13dB Gain
- Thermal Tracking Bias
- DC Power Connector
- Temperature Monitoring
- Current Sense Resistors
- BLF861A Mosfet
- Made in the USA



Dimension (L x W x H inch) [6.0" x 2.4" x 0.85"]

| Absolute Maximum Ratings |  |           |         |
|--------------------------|--|-----------|---------|
| Symbol                   | Parameter                                | Value     | Unit    |
| Vs                       | Drain voltage supply                     | 34        | V DC    |
| Is                       | Supply Current                           | 12        | A dc    |
| VSWR                     | Load Mismatch (All phase angles, Id=11A) | 10 to 1   |         |
| Tc                       | Base plate operating temperature         | 0 to +70C | Celsius |
| RF IN                    | RF Input                                 | 6.5       | Watts   |
| RF OUT                   | RF Output CW                             | 150       | Watts   |

| Electrical Specifications                |     |        |     |         |
|--|-----|--------|-----|---------|
| Characteristics                          | min | typ    | max | unit    |
| Operating Frequency range                | 470 |        | 860 | MHz     |
| Fundamental output power - CW            | 150 |        |     | W       |
| Power Input                              |     | 3      | 6   | W       |
| Input VSWR                               |     | 2.5    | 3.0 | VSWR    |
| Power Gain                               | 12  | 13     |     | dB      |
| Collector Efficiency                     |     | 35     |     | %       |
| Collector Current                        |     | 7.5    | 12  | A dc    |
| Supply Voltage                           | 28  | 32     | 32  | V dc    |
| Insertion Phase variation (unit to unit) |     | +/-5.0 |     | degrees |
| Power gain (unit to unit)                |     | +/-0.5 |     | dB      |
| Two Tone IMD; 50W 1MHz Spacing           | -40 |        |     | dBc     |
| F2 Second Harmonic                       |     | -20dB  |     | dB      |
| F3 Third Harmonic                        |     | -35dB  |     | dB      |
| Bias Current: Factory set to 1.0A @32V.  | 1.0 | 1.0    | 3.0 | A dc    |